

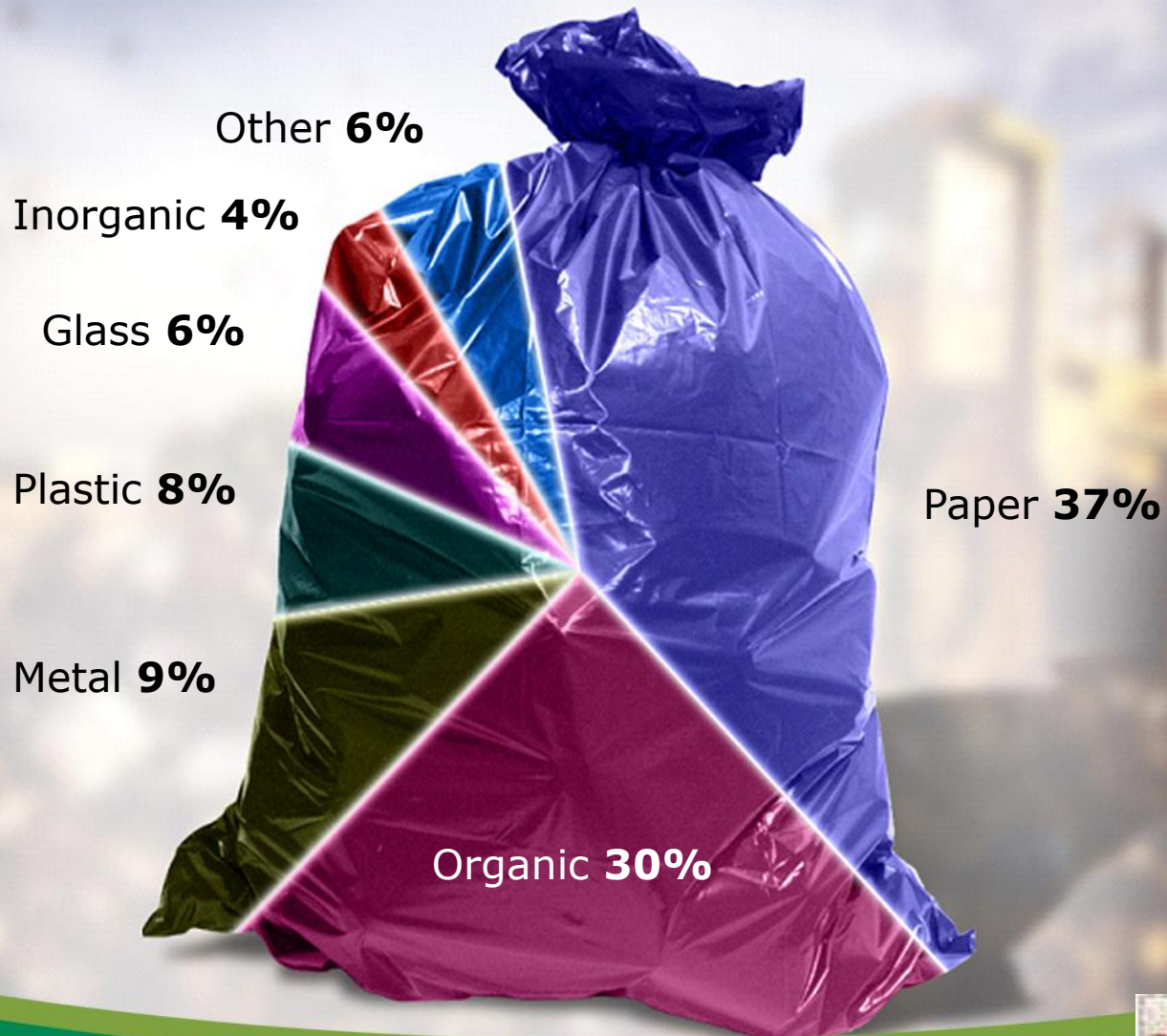


Recycling Information Session

**Wednesday, April 27
Community Centre**



Town of Holyrood



Compost your way to



Information Package

- **Brochure from Eastern Waste Management**
- **Flyer from the Town of Holyrood**
- **Sample package of Blue Recycling Bags**



Recycling Start Date

- **Tuesday, May 3, 2011**

Collected every seconded Tuesday

Ex: May 3, May 17, May 31

**Calendar included in packages, also on
www.townofholyrood.com**

Community Calendar



Why Recycle?

- **On average, we collect 50 tonnes of garbage per month**
- **We will save \$45.50 in tipping fees for each tonne of garbage that we turn into recyclables**
- **We need to reduce our carbon footprint on this planet**



Our Goal

Attain 50% Diversion



Three Simple Steps

- **Sort It**
- **Bag It**
- **Curb It**



What Goes In? Metal & Plastics

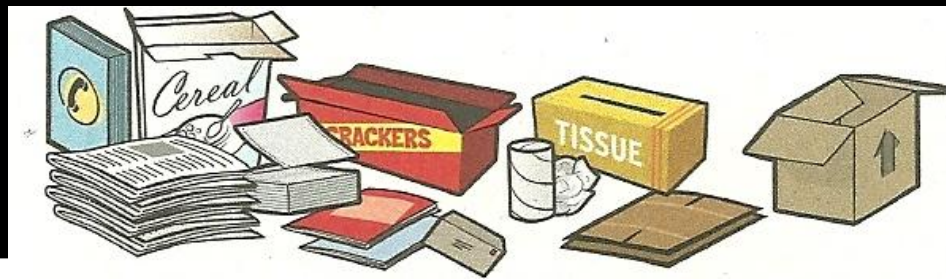
- **Aluminum (e.g. pop & beer cans, pie plates)**
 - **Plastic Bottles (e.g. water ,pop, liquor)**
- **Plastic Containers (e.g. ice cream, ketchup, bleach, shampoo, butter)**
 - **Tin Cans (e.g. soup, cat food)**
 - **Gable Tops (e.g. milk & juice cartons)**
 - **Tetra Paks (e.g. juice boxes, soup)**

The only plastic we do not take is #4 which is plastic film



What Goes In? Paper & Cardboard

- **Newspapers**
- **Flyers**
- **Magazines**
- **Catalogues**
- **Envelopes**
- **Writing & Computer Paper**
(lined, white, coloured)
- **Books** *(remove hardcover's)*
- **Boxboard**
e.g. cereal, detergent boxes & more
- **Egg Cartons**
(cardboard kind)
- **Paper Bags**
- **Toilet Paper Rolls & Paper Towel Rolls**
- **Corrugated Cardboard**
clean, unwaxed, bagged or bundled 2'x2'x1'



What Stay's Out

- **Glass** • **Plastic Bags/Wrap** • **Aerosol & Paint Cans** • **Syringes** • **Styrofoam** • **Diapers** • **Kitty Litter** • **Drink/Coffee Cups** • **Gift Wrapping Paper**



*** Please note that glass beverage containers are accepted for the Holy Cross Recycling Program as well as at any Green Depot Location ***



Beverage Container Recycling

- **Donate to Holy Cross Elementary**

Drop off at :

- **Town Depot**
 - **Holy Cross**
-
- **Bring to Green Depot**
-
- **Put in Blue Bag**

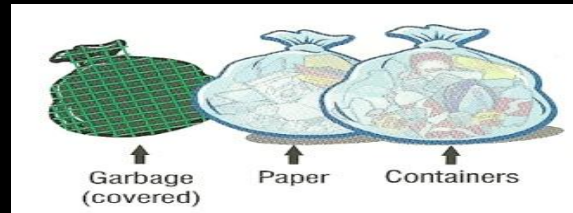


How to sort your Recyclables- Suggestions

- **Use only clear blue bags**
- **Place containers and papers in separate clear blue bags**
- **Glass is not accepted**
- **Place recyclables loosely in the blue bags**
- **Do not put grocery store bags in with recyclables**
- **Rinse food from your containers, especially milk cartons**
- **Any plastic or metal containers for which a refund is available can still be brought to Green Depot**

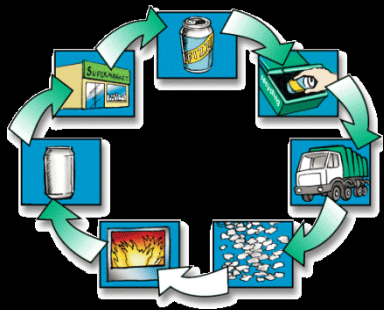
How to sort your Recyclables- Suggestions

- **Residents must place blue transparent bags of recyclables at the curb next to garbage**



- **Do not cover paper and container recycling bags when placing to the curb**
- **Please have recyclables/garbage placed to the curb by 7:00 am**

Other Diversion Initiatives



- **Composting**



- **Metals**

- **Wood Chipper/Mulcher**



- **Bulk Clean Up**



Questions/Comments



Thank You!